

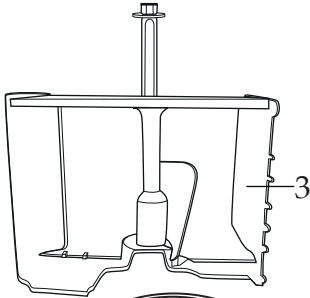
035755
2 Piece Lid (WCIC20LID)



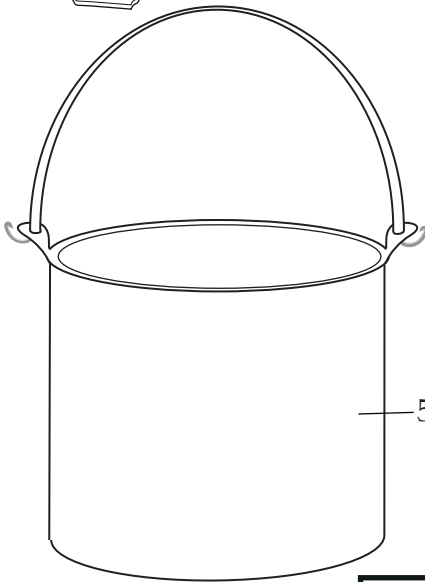
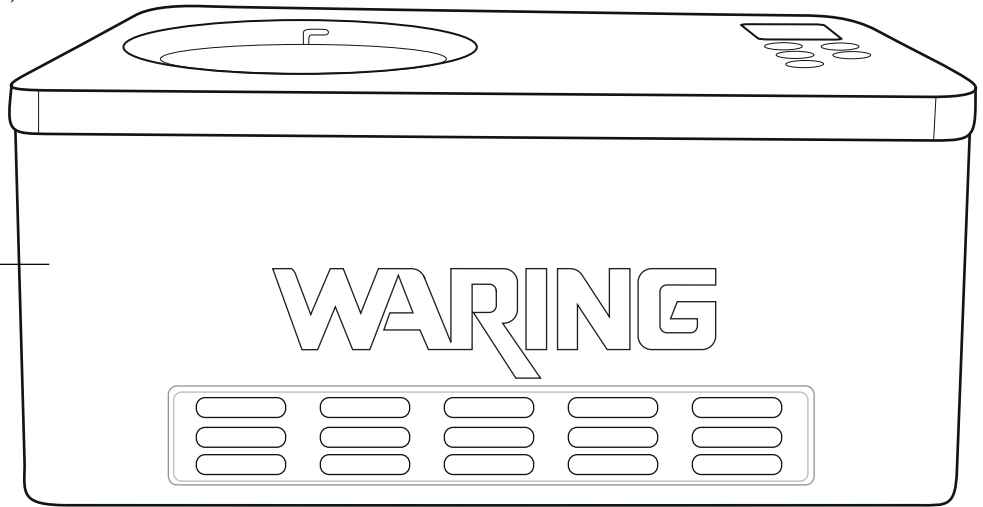
035715
Brush



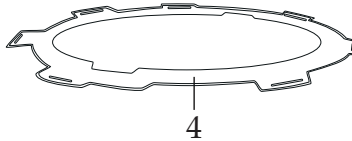
Europe 2 Qt. Compressor Ice Cream Maker
WCIC20E



6



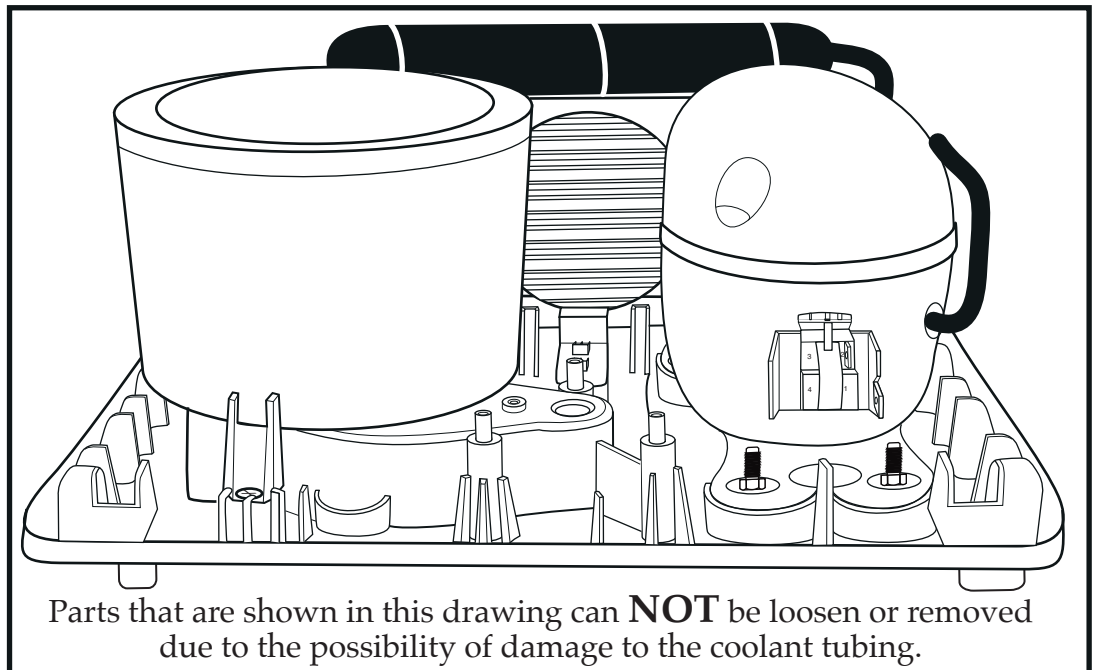
5



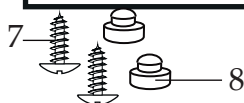
4



Date Code Location
WWYY
(week week year year)



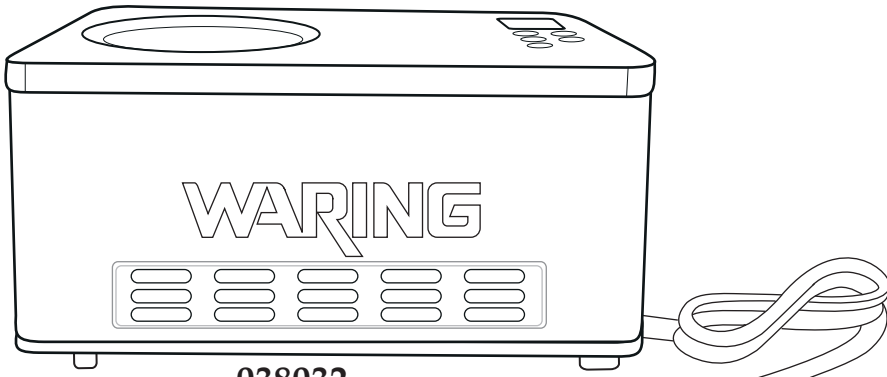
Parts that are shown in this drawing can **NOT** be loosen or removed due to the possibility of damage to the coolant tubing.



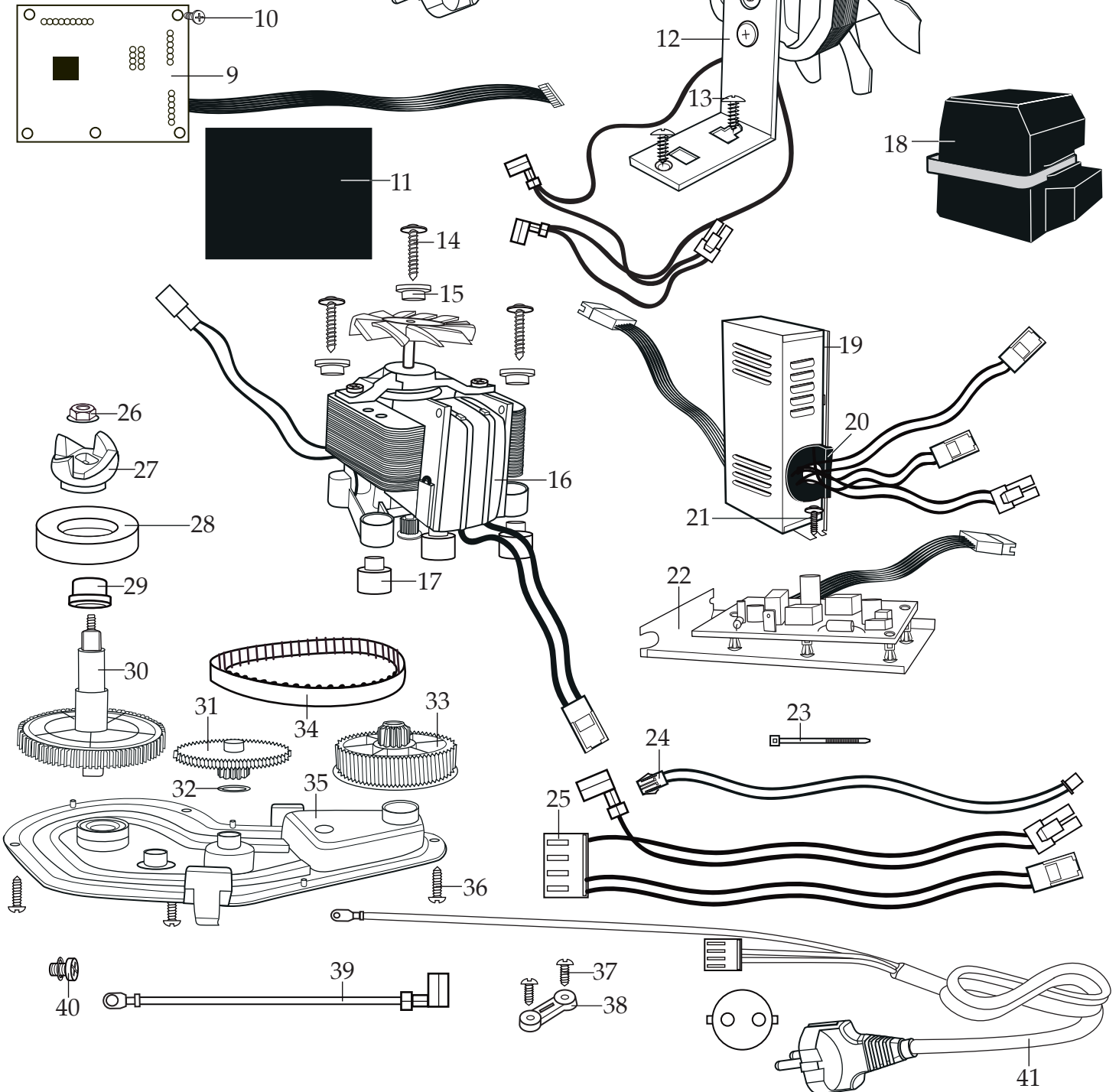
WARING COMMERCIAL

Base Unit Components

WCIC20E



038032
WCIC20E Unit Assembly
(with no bowl, paddle, or 2 pc lid)



Illustration#	Part#	Description
1	035712	Batch Bowl Lid
2	035713	Mix Ingredient Lid
3	035714	Mixing Paddle
4	038033	Bowl Seal
5	035716	Removable Bowl
6	038034	Top Housing Assembly
7	035720	Base Plate Assembly Screw (10 required)
8	035721	Foot (2 required)
9	035722	PCB Control with Lead Tape
10	035723	PCB Control Screw (4 required)
11	035724	Rubber Stickey Sheet
12	038035	Fan Motor with Bracket Assembly
13	035720	Fan Motor Screw (2 required)
14	035725	Mixing Motor Screw (3 required)
15	035726	Small Rubber Motor Mounts (3 required)
16	038036	Mixing Motor Assembly
17	035728	Large Rubber Motor Mounts (3 required)
18	035734	Pole Terminal Cover
19	038037	Power Supply Assembly Complete
20	035736	Rubber Wiring Tube (2 required)
21	035737	Power Supply Assembly Mounting Screw
22	038038	Power Supply Board Assembly with Plate
23	013731	Wire Tie (4 required)
24	038039	Black Lead Harness
25	038040	Red-Blue Lead Harness
26	035741	Nut
27	035742	Nether Clutch
28	035743	Seal

Illustration#	Part#	Description
29	035744	Bearing
30	035745	Cylinder B Gear Assembly
31	035746	Cylinder A Gear
32	035747	Nylon Washer (2 required)
33	035748	Big Gear
34	035749	Drive Belt
35	035750	Base Gear Cover
36	035723	Base Gear Cover Screw (3 required)
37	035723	Cord Clamp Screw (2 required)
38	035751	Cord Clamp
39	038041	Green/Yellow Ground Lead
40	038042	Ground Screw with Washer (2 required)
41	038043	Cord with Lead Assembly